



QUATE Aptitude Test for Cytotechnologists



Registration Form

Name:

Address (work):

Telephone:
email address:

Qualifications (with date):

Total number of slides screened:

Date employment in cytology commenced:

I apply to sit the Aptitude Test with (please select examination format):
Conventional smears / Surepath LBC / ThinPrep LBC

Signature:

Date:

This application must be approved by the national member of QUATE (as verification that the applicant fulfills the entry criteria):

Signature National QUATE member:

Date:

The examination fee of €150.- must be sent to the national QUATE delegate.

Andrew Evered
Cytopathology Dept
Llandough Hospital
Penlan Road
CF64 4AE
UK

Email: Andrew.Evered@wales.nhs.uk
Phone: +44 (0) 29 20715596

Information on national members of the QUATE Committee can be found at:

<http://zytotraining.schenck.de/admin/user/attachments/Quate-Website.htm>



QUATE Aptitude Test

Information to Candidates

Multiple Choice Questions

50 questions in one hour

Choose the one best answer from the five listed and draw a bold line through the square A B C D or E

There are no trick questions

It is in your best interest to attempt ALL the questions because of the marking scheme.

Marking – one mark for each correct answer and zero for missing or wrong answers.

See sample questions and answer sheet.

Spot Test

20 images which will be displayed for 45 seconds.

Choose one answer from the list of codes you will be given.

Write the code on the answer sheet

If you wish to enter a description there is a space to do that.

You may see the same feature more than once in the spot test.

Marking – two marks for a correct answer and zero for a missing or wrong answer. Occasional slides will have one mark for an almost correct answer.

See sample images and codes.

Screening

12 slides to screen. Slides rotated every 10 minutes for conventional smears and 7 minutes for LBC.

You will not see the slide again once you have passed it on. Do not mark the slide in any way.

You **MUST** choose **ONE** answer **ONLY** in the shaded part of the answer sheet

In the unshaded section you can tick any appropriate boxes

All slides are considered satisfactory for reporting. If you wish you may comment on the presence or absence of endocervical cells but this will not be marked.

If HPV changes (koilocytosis) are present the slide must be called abnormal and graded accordingly

Marking – two marks for a correct answer and zero for a missing answer or incorrect grading of an abnormality.

Occasional slides will have one mark for an almost correct grading. **HOWEVER, calling an abnormal slide normal will result in a minus score which means you will fail the exam.**



QUATE Aptitude Test

Information to Candidates

Example MCQs:

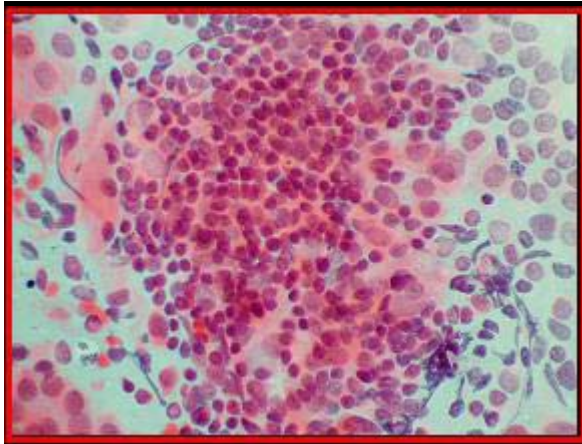
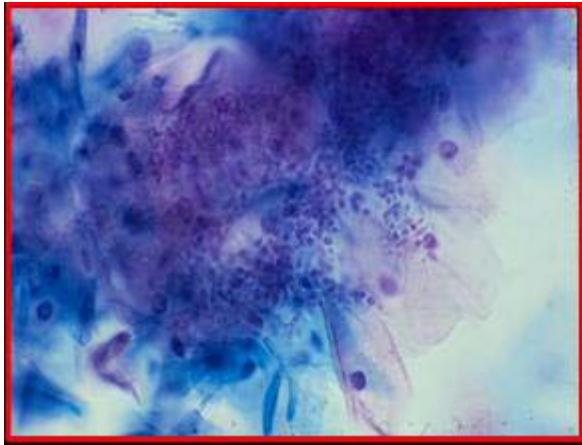
In ectropy (ectropion) the squamo-columnar junction has:

- a eroded
- b everted
- c ulcerated
- d inflamed
- e metaplased

The central part of the ovary is termed the:

- a hilum
- b cortex
- c stroma
- d follicle
- e medulla

Example Spots:



EUROPEAN FEDERATION OF CYTOLOGY SOCIETIES

QUATE APTITUDE TEST

SPOT TEST

MULTIPLE CHOICE LIST

CODE	Description	
A	Normal squamous cells	
B	Navicular cells	
C	Normal endocervical cells	
D	Squamous metaplasia (including Repair)	
E	Histiocytes / macrophages	
F	Normal endometrial cells	
G	Candida (Monilia)	
H	Trichomonas Vaginalis	
I	Leptothrix	
J	Clue cells	
K	Actinomyces	
L	Herpes simplex virus	
M	Entamoeba/schistosoma	
N	Follicular cervicitis / lymphocytes / plasma cells	
O	Altenaria / contaminant / pollen / artefact	
P	Sperm	
Q	Radiation change	
R	Koilocytosis and other HPV changes	
S	Mild dysplasia (CIN 1)	
T	Moderate dysplasia (CIN 2)	
U	Severe dysplasia (CIN 3)	
V	Invasive squamous carcinoma	
W	Glandular abnormality (CGIN/AIS)	
X	Endocervical adenocarcinoma	
Y	Endometrial adenocarcinoma	
Z	Metastatic / extrauterine malignancy	

This space is provided for you to give:

- **The reason you found a slide UNSATISFACTORY**
- **Any other comments you wish to make about a slide.**

Slide 1	
Slide 2	
Slide 3	
Slide 4	
Slide 5	
Slide 6	
Slide 7	
Slide 8	
Slide 9	
Slide 10	